



Module HC 144 555Watt

Positive power tolerance of 0~+3%
HALF CELL - MONO PERC 144 CELL

Complete System and Product Certifications

IEC 61215, IEC 61730, IEC61701
ISO9001:2015 : ISO Quality Management System
ISO14001: 2015 : ISO Environment Management System
ISO45001:2018 : Occupational Health and Safety



KEY FEATURES



Multi Busbar Solar Cell



High Efficiency



PID Resistance



Low-light Performance

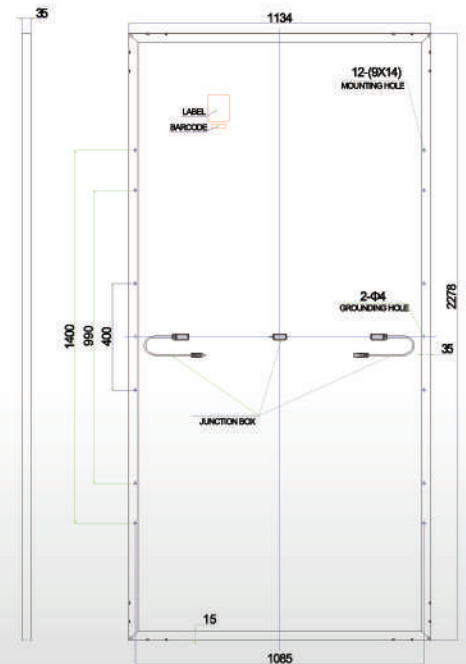
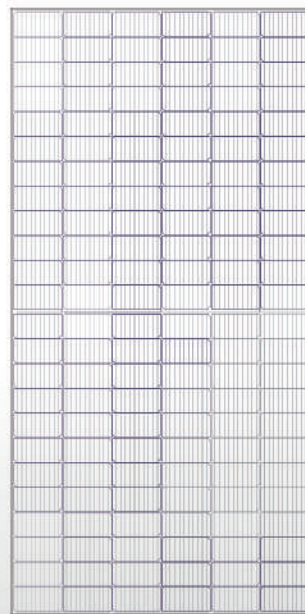


Severe Weather Resilience



Durability Against Extreme Environmental Conditions

ENGINEERING DRAWINGS



Remark: All units in mm

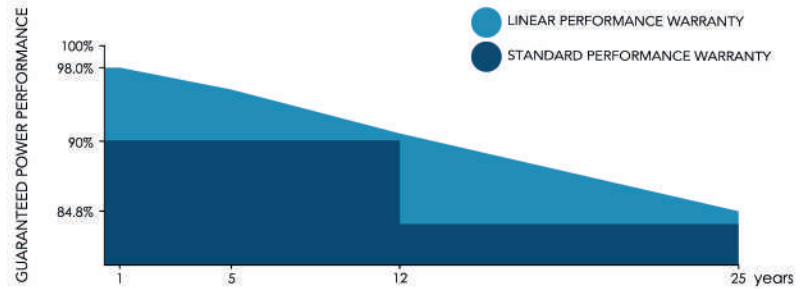
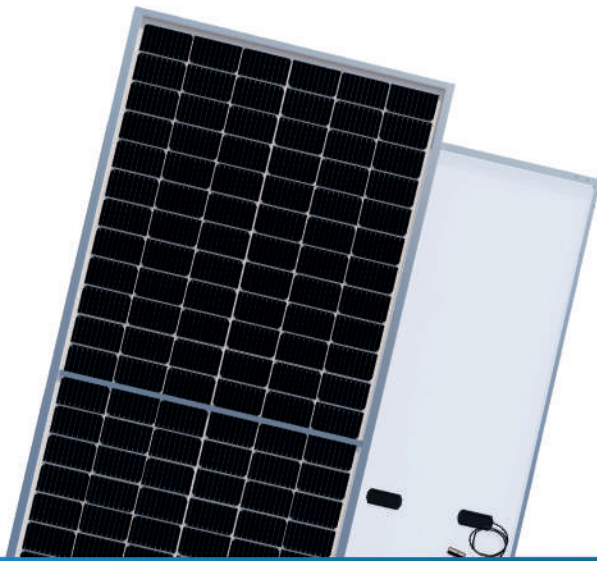
PACKAGING CONFIGURATION

(Two pallets = One stack)

31pcs/pallet , 62pcs/stack, 682pcs/53FT Truck



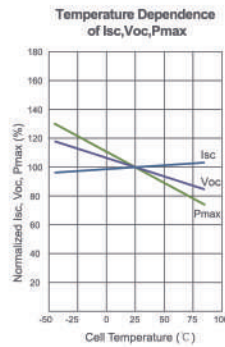
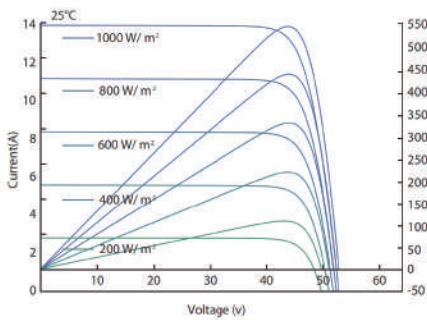
LINEAR PERFORMANCE WARRANTY



Up to 25-Year Product Warranty

25-Year Linear Power Warranty

ELECTRICAL PERFORMANCE & TEMPERATURE DEPENDENCE



MECHANICAL CHARACTERISTICS

Cell Type	Mono PERC 182x91mm
No. of Half-cells	144 (6x24)
Dimensions	2278x1134x35mm (89.68x44.64x1.37 inch)
Weight	28.0 kg (61.7 lbs)
Front Glass	3.2mm, Anti-Reflection Coating, High Transmission, Low Iron, Tempered Glass
Frame	Anodized Aluminium Alloy
Junction Box	IP68 Rated, connector compatible with MC4
Output Cables	TUV 1x4.0mm 450mm/1200mm or Customized Length
Fire Rating	UL: Type 1, IEC: Class C
Maximum static load	5400Pa (front side), 2400Pa (back side)

SPECIFICATIONS

Module Type	SE-182*91-550M-144		SE-182*91-555M-144		SE-182*91-560M-144	
	STC	NOCT	STC	NOCT	STC	NOCT
Maximum Power (Pmax)	550W	412W	555W	416W	560W	420W
Maximum Power Voltage (Vmp)	41.99	38.99	42.14	39.13	42.29	39.27
Maximum Power Current (Imp)	13.10	10.57	13.17	10.63	13.24	10.69
Open-circuit Voltage (Voc)	49.72	46.83	49.87	46.98	50.02	47.12
Short-circuit Current (Isc)	14.02	11.28	14.08	11.32	14.14	11.37
Module Efficiency STC (%)	21.31%		21.48%		21.68%	
Operating Temperature (°C)	-40°C~+85°C					
Maximum System Voltage	1500VDC (IEC)					
Maximum Series Fuse Rating	25A					
Power Tolerance	0~+3%					
Temperature Coefficients of Pmax	-0.35%/°C					
Temperature Coefficients of Voc	-0.29%/°C					
Temperature Coefficients of Isc	0.048%/°C					
Nominal Operating Cell Temperature (NOCT)	45±2°C					

STC: ☀ Irradiance 1000W/m²

🌡 Cell Temperature 25°C

☁ AM=1.5

NOCT: ☀ Irradiance 800W/m²

🌡 Cell Temperature 20°C

☁ AM=1.5

🌀 Wind Speed 1m/s

Power measurement tolerance: ± 3%

Contact us!

Become the best solar company for the world +1 949 354 8694 accounts@solareverusa.com