



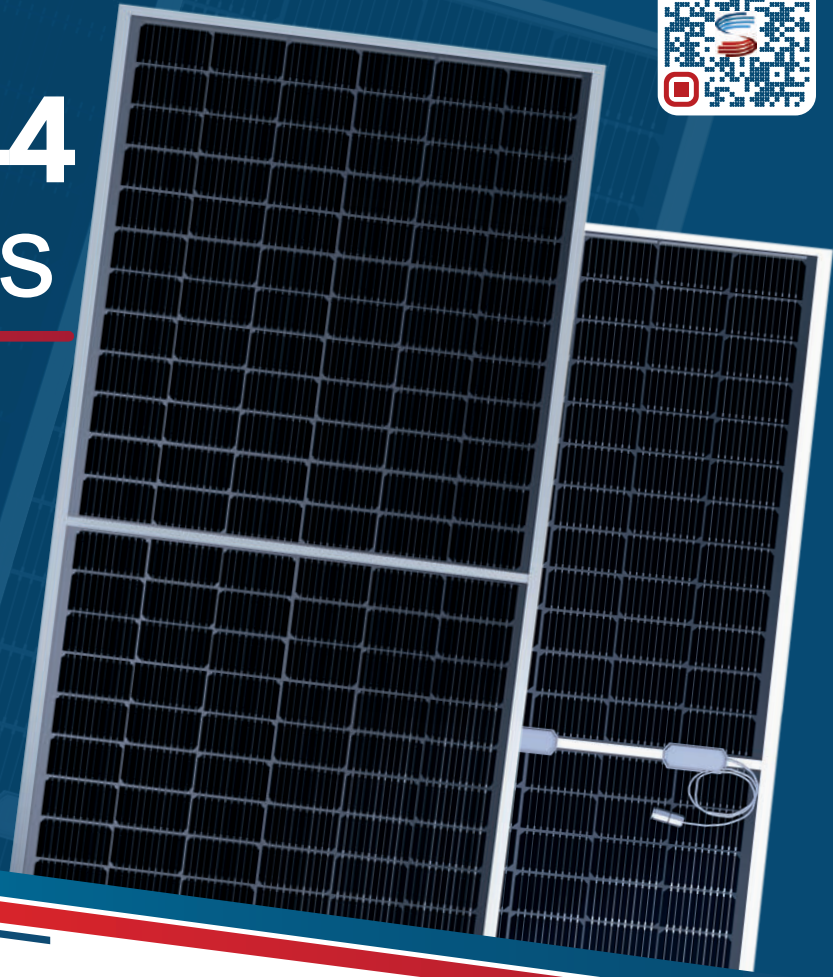
# Module HC 144 575-595 Watts

Mono-Crystalline N Type  
Dual Glass Bifacial Silver Frame

SE-182\*91-XXXM-144-BD

### Complete System and Product Certifications

IEC 61215, IEC 61730, UL61730  
ISO 9001:2015:ISO Quality Management System  
ISO 14001:2015:ISO Environment Management System  
ISO 45001:Occupational Health and Safety



## KEY FEATURES



Multi Busbar Solar Cell



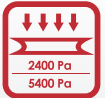
High Efficiency



PID Resistance



Low-light Performance

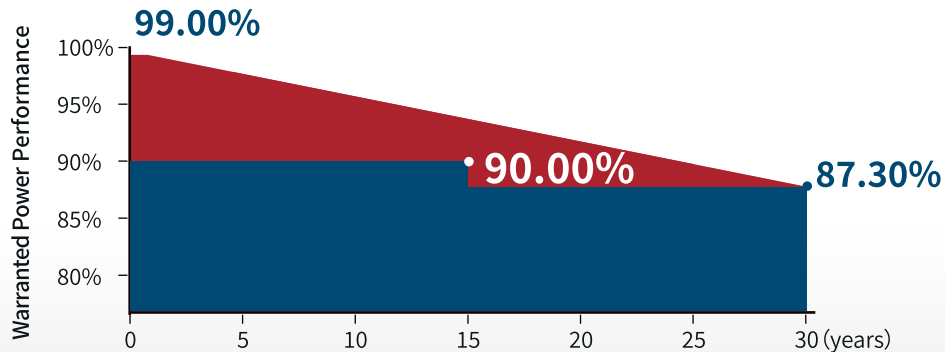


Severe Weather Resilience



Durability Against Extreme Environmental Conditions

## LINEAR PERFORMANCE WARRANTY



● Linear performance warranty ● Standard performance warranty

⌚ Up to 25-Year Product Warranty

⌚ 30-Year Linear Power Warranty

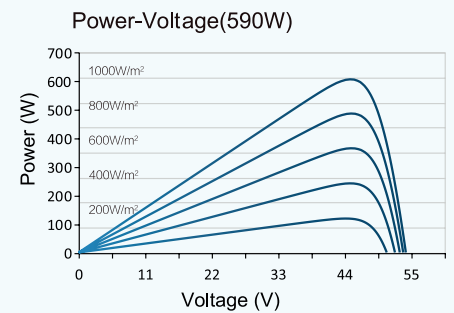
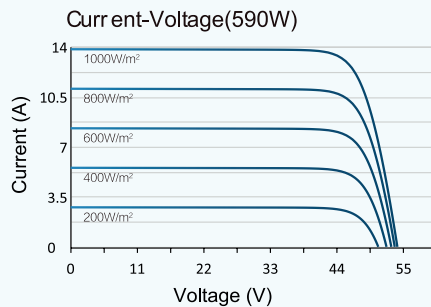
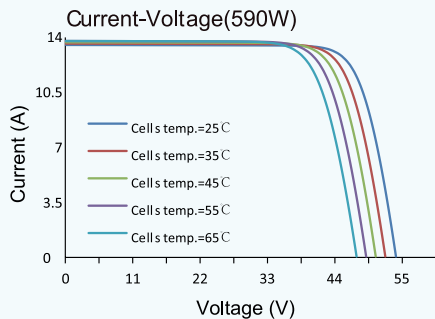
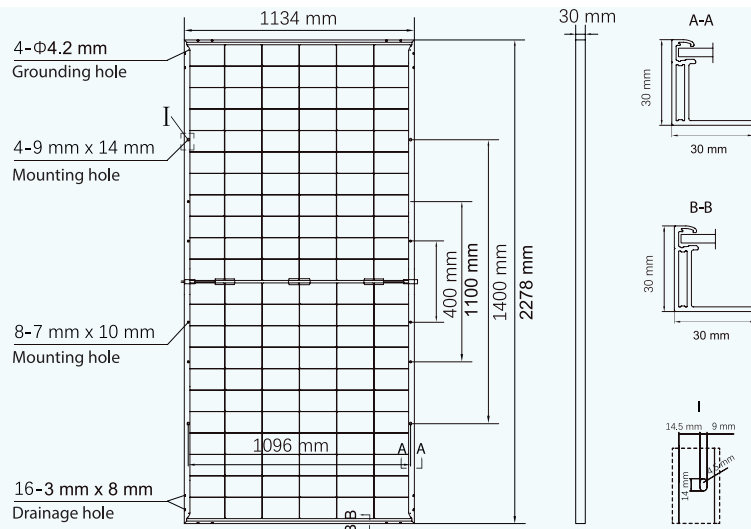
## PACKAGING CONFIGURATION

(Two pallets = One stack)

36pcs/pallet , 72pcs/stack,792pcs/53FT Truck



# Drawings (Unit:mm)



## Mechanical Parameters

Cells	N-Type Mono-crystalline -
Cell Orientation	144 (6*24)
Dimension	2278 x 1134 x 30 mm (89.68x44.64x.1.18 inch)
Weight	31.5 kg (69.44lb)
Front / Back Glass	2.0+2.0 mm
Frame	Aluminum, Silver Anodized
Junction Box	HCB40 (Estándar)
Output Cable	4 mm² / 12 AWG
Cable Length	1400mm or Customized Length
Wind / Snow Load	2400Pa/5400Pa
Fire Rating	UL: Type 1, IEC:Class C
Packaging	36pcs/pallet, 72pcs/stack, 900pcs/53FT Truck

## Temperature Parameters

Temperature Coefficient (Pmax)	-0.28%/°C
Temperature Coefficient (Voc)	-0.24%/°C
Temperature Coefficient (Isc)	+0.046%/°C
NMOT	41 ± 2°C

## Maximum Ratings

Operational Temperature	-40°C~+85°C
Maximum System Voltage	1500V DC
Maximum Series Fuse Rating	30 A
Power Output Tolerance	0~+3%

## Electrical Characteristics(STC)

**STC:** Irradiance 1000W/m², Cell Temperature 25°C, Air Mass1.5, Measuring Tolerance: ±3%

Maximum Power:Pmax[W]	575	580	585	590	595
Open Circuit Voltage:Voc[V]	52.10	52.30	52.50	52.70	53.20
Short Circuit Current:Isc[A]	13.80	13.85	13.90	13.95	14.15
Voltage at Maximum Power:Vmp[V]	43.76	43.93	44.10	44.27	44.41
Current at Maximum Power:Imp[A]	13.14	13.21	13.27	13.33	13.40
Module Efficiency: η [%]	22.3%	22.5%	22.6%	22.8%	23.0%

## Electrical Characteristics(NMOT)

**NMOT:** Irradiance 800W/m², Ambient Temperature 20°C, Air Mass1.5, Wind Speed 1m/s

Maximum Power:Pmax[W]	432.4	436.2	439.9	443.7	447.4
Open Circuit Voltage :Voc[V]	49.50	49.69	49.88	50.07	50.54
Short Circuit Current :Isc[A]	11.14	11.18	11.22	11.26	11.42
Voltage at Maximum Power:Vmp[V]	40.76	40.89	41.08	41.24	41.35
Current at Maximum Power:Imp[A]	10.61	10.67	10.71	10.76	10.82

## Electrical Characteristics(Rear Power Gain)

5%	Maximum Power:Pmax[W]	604	609	614	619	624
	Module Efficiency: η [%]	23.39	23.58	23.76	23.96	24.15
15%	Maximum Power:Pmax[W]	661	667	673	678	684
	Module Efficiency: η [%]	25.58	25.82	26.05	26.24	26.47
25%	Maximum Power:Pmax[W]	719	725	731	737	743
	Module Efficiency: η [%]	27.83	28.06	28.29	28.55	28.76